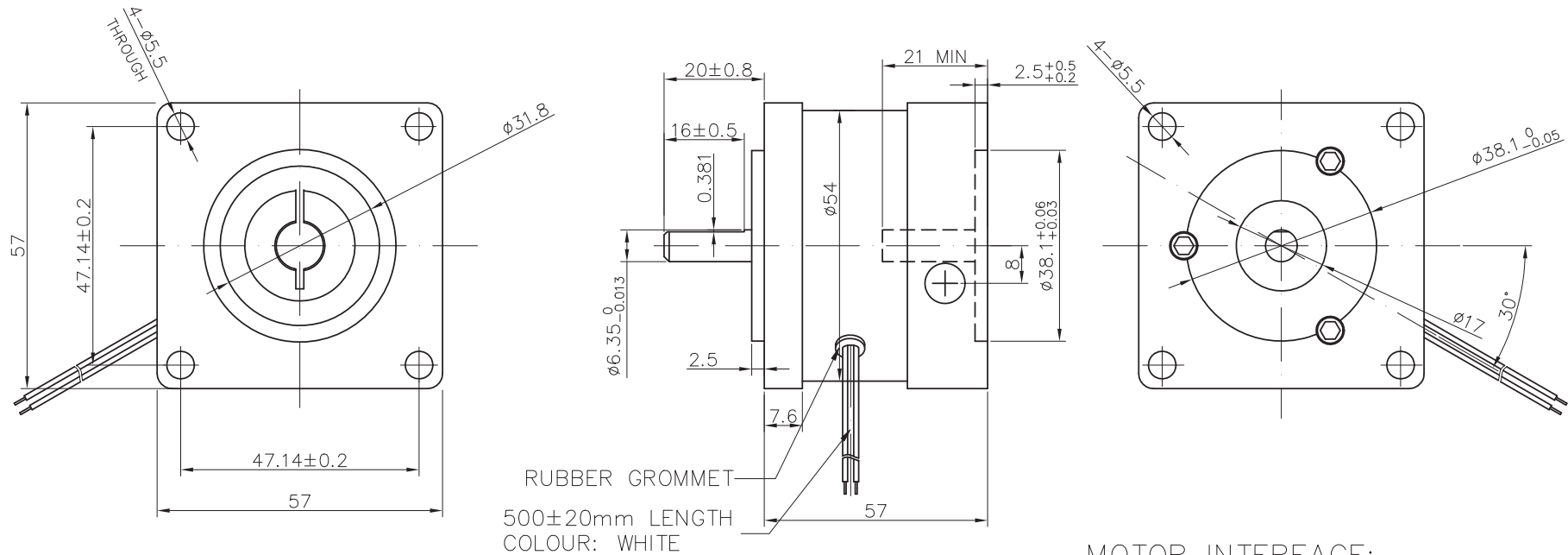
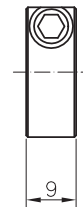
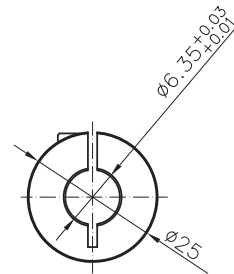
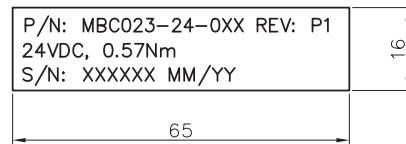


REV	DESCRIPTION	DATE	APPROVE
P1	PRELIMINARY	25/09/25	ZZF



NOTE :

- 1, VOLTAGE : 24VDC
- 2, STATIC TORQUE : 0.57Nm Min.
- 3, RATED CURRENT : 0.34 A
- 4, POWER : 8.2 W
- 5, RESISTANCE : 70 Ohms
- 6, START VOLTAGE : 22 VDCMAX
7. HI-POT: 500VAC/1S, 2mA
8. POWER OFF BRAKE
9. OFFER AN FIXED SCREW M4X10 WITH THE BRAKE



NOTE: THIS DRAWING HAS BEEN CREATED BY AUTOCADMANUAL REVISIONS ARE NOT ALLOWED.

MATERIAL			TOLERANCE UNLESS OTHERWISE SPECIFIED ISO 2768-1 MEDIUM		
DRAWN ZQY	CHECKED	APPROVED - DATE	FILENAME	DATE xx/xx/xx	SCALE N/A
			BRAKE		
			MBC023-24-034		
					SHEET 1/1