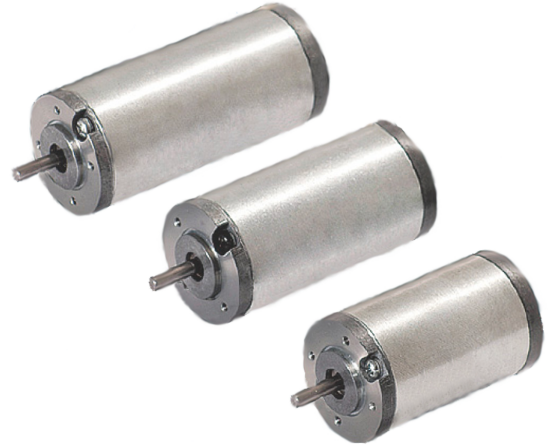


PM042DK

DC Brush Motor



● General Information

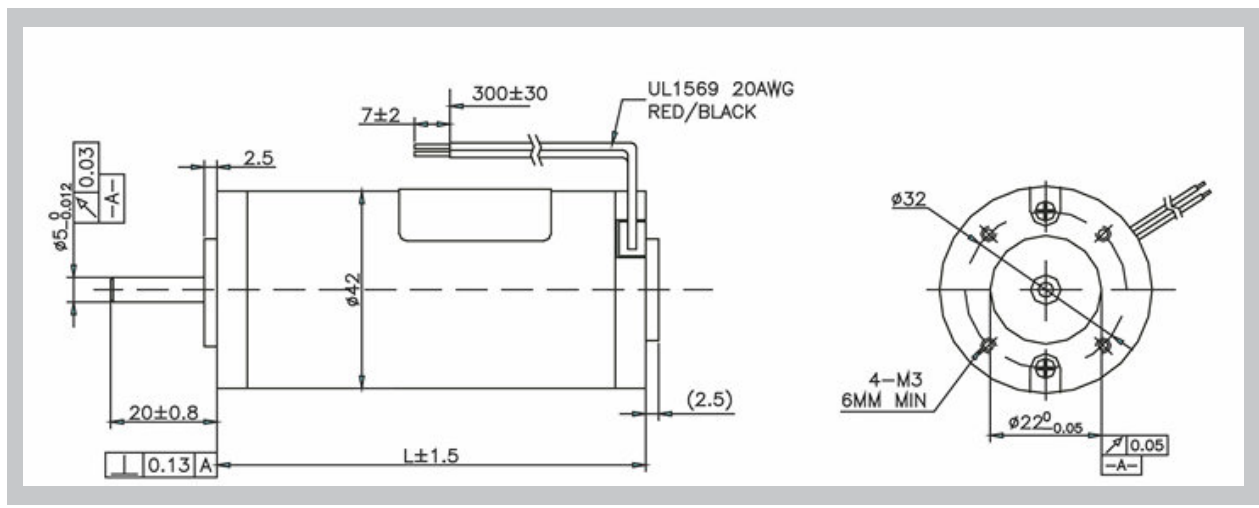
- Mounting Holes to DIN Standard
- Copper-Graphite Brushes
- Encoder Brake and Planetary Gearbox Available
- Ball Bearings

● Specifications

Specification	PM042DK100	PM042DK200	PM042DK300
<i>Voltage (VDC)</i>	24	24	24
<i>No Load Speed (RPM)</i>	4250	4000	3750
<i>No Load Current (A)</i>	0.2	0.2	0.15
<i>Nominal Speed (RPM)</i>	3400	3000	3000
<i>Nominal Torque (Ncm)</i>	4	7.5	9
<i>Nominal Current (A)</i>	1	1.6	1.75
<i>Nominal Power (W)</i>	14.3	24	28.3
<i>Peak Torque (Ncm)</i>	15	30	37
<i>Peak Current (A)</i>	3.5	6	7.5
<i>Voltage Constant (V/KRPM)</i>	5.34	5.8	6.03
<i>Rotor Inertia (Kg.cm²)</i>	0.06	0.095	0.13
<i>Terminal Resistance (OHMS)</i>	5.31	4.15	3.72
<i>Insulation Class</i>	B	B	B
<i>Weight (Kg)</i>	0.48	0.6	0.64
<i>Length (mm)</i>	75	85	95

PM042DK

● Mechanical



● Characteristic Diagram

